



| | |
|----------------------|--|
| Briefing for: | Children's Safeguarding Policy and Performance Advisory Committee |
| Title: | Quality of Practice Audit - update |
| Lead Officer: | Marion Wheeler AD Safeguarding Children and Young People's Service Marion.wheeler@haringey.gov.uk 0208 489 1912 |
| Date: | March 2010 |

1. Describe the issue under consideration

Quality of Practice Audits

A new audit framework has been developed and was implemented throughout September 2009 with the first set of audits focusing on quality of practice completed in October 2009. A random sample of cases were selected from across Children and Families and allocated to Heads of Service and Senior Team Managers for auditing.

2. Background information

The audit is divided into 10 domains/sections (Referral and Response, Risk Assessment, Key Decisions, Key Assessment Episodes, Key Planning and Reviewing, Child/YP focused practice, Supervision/ Management Overview, Direct Engagement/professional relationships, Reporting and Recording and Case Transfer and Closure).

More specific themed audits will also be conducted periodically where a need has been identified.

Heads of Service are responsible for following up actions in relation to all audits rated as inadequate. A sample of these audits is then re-audited on a quarterly basis and notified to Assistant Director and Deputy Director to ensure any identified issues have been followed up and relevant action taken. These audits are undertaken on a monthly basis with a monthly report and overview



Haringey Council

presented to the Children and Families Performance Management Team for discussion.

3. Summary of Key Messages – (October - December and February Audits)

Cases Audited

- 181 Cases audited across Children and Families
 - 34 Children Subject to a CP plan
 - 39 First Response Team Cases (excl CP)
 - 40 Children in Need and Safeguarding Team Cases (excl CP)
 - 31 Children in Care
 - 15 Leaving Care
 - 22 Children with Disabilities

Overall Ratings

- 1 Case rated as outstanding
- 63 Cases rated as good (35%)
- 78 Cases rated as adequate (43%)
- 35 Cases rated as inadequate (19%)
- 4 Cases rated as critical

Domain Ratings

- Areas of **good** practice – Supervision and Management overview, Key Assessment Episodes and Case Transfer and Closure.
- Areas of **poor** practice – Key Decision Meetings, Child and Young Person Focused Practice and Referral and Response

4. Summary of Key Messages January 2010 Audit – Themed Child Protection Core Assessment

- In January 2010 a themed audit tool was devised based on the standard quality of practice audit tool, to look specifically at how the new format of the child protection core assessment is working. 39 cases were looked at across 3 domains, strategy discussion, child protection core and conference.
- In the **strategy discussion** domain, 11 cases were rated as Inadequate, 16 cases rated as adequate and 11 cases were rated as good. In the **child protection core assessment** domain, 2 cases were rated as inadequate, 21 cases rated as adequate and 15 cases were rated as good. In the domain that looked at the **child protection conferences**, 2 cases were rated as inadequate, 7 cases were rated as adequate and 26 cases were rated as good.

5. Options for consideration

This item is for members information. The documentation will assist members in understanding the newly developed audit tool being used across children and Families social work teams to ensure that we continue to progress



Haringey Council

improvements in the quality of social work practice undertaken by staff with vulnerable children and families in the borough

- **Financial Implications**

None

- **Legal Implications**

None

- **Policy Implications**

Development of management tools to embed and deliver evidence of robust auditing and management oversight of the quality of our social work practice is a key action in the Haringey Safeguarding (JAR) plan

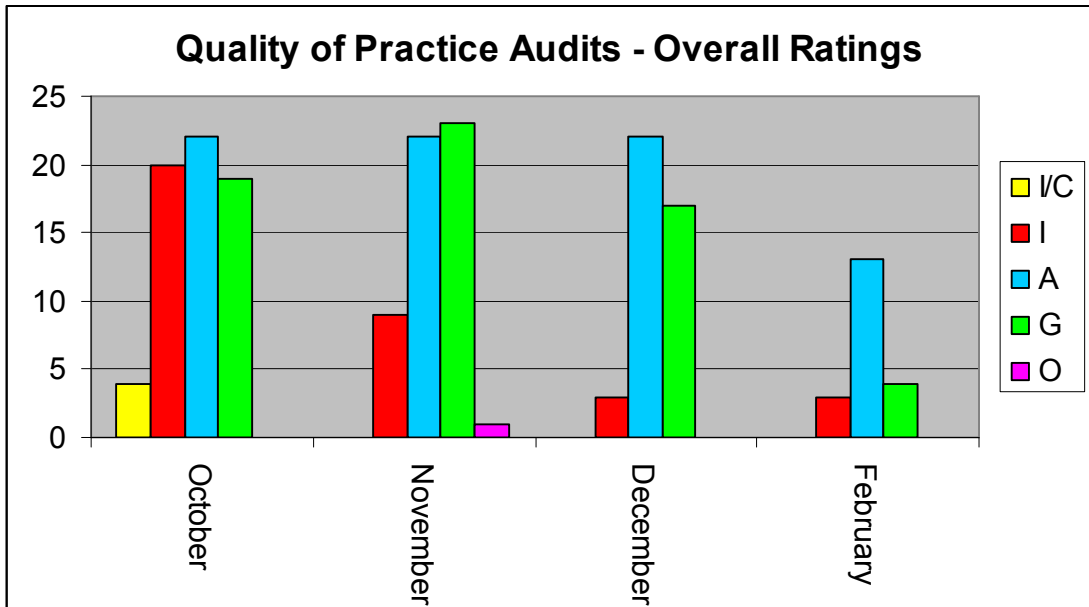
- **List the proposed routing for the report through the formal decision making process**

Not for decision making

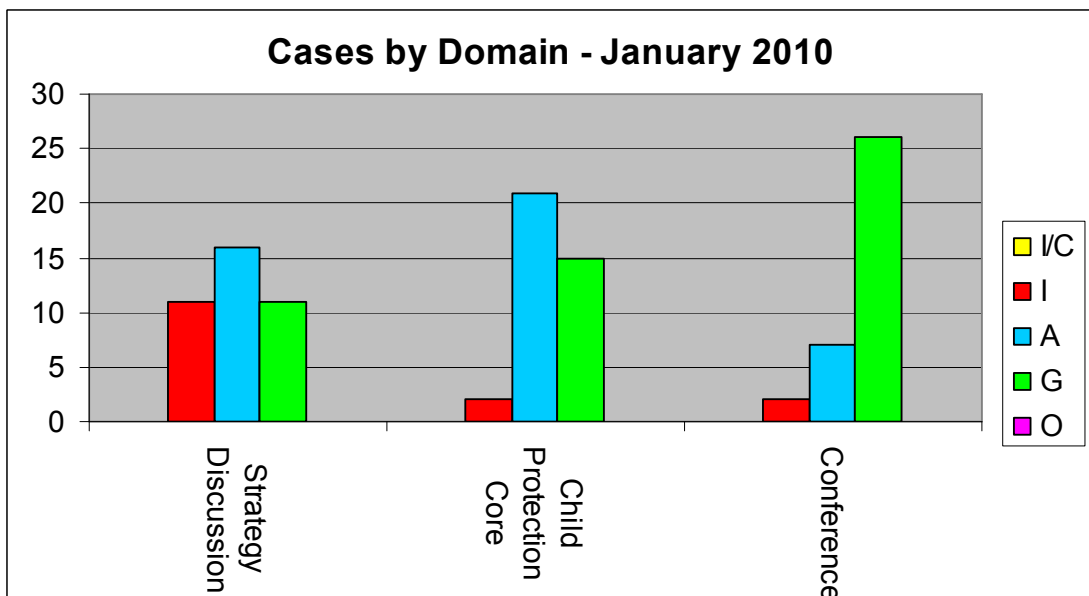
See appendix 1 for detailed analysis and summary of the practice audit findings



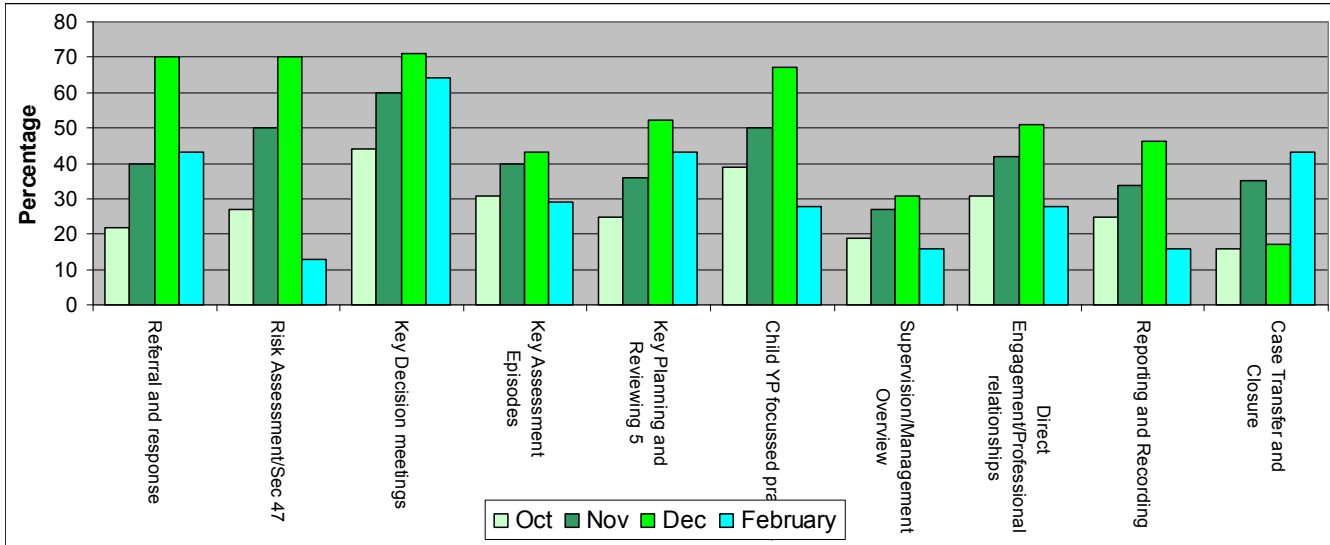
Summary of Cases Audited – number by rating - October to December and January



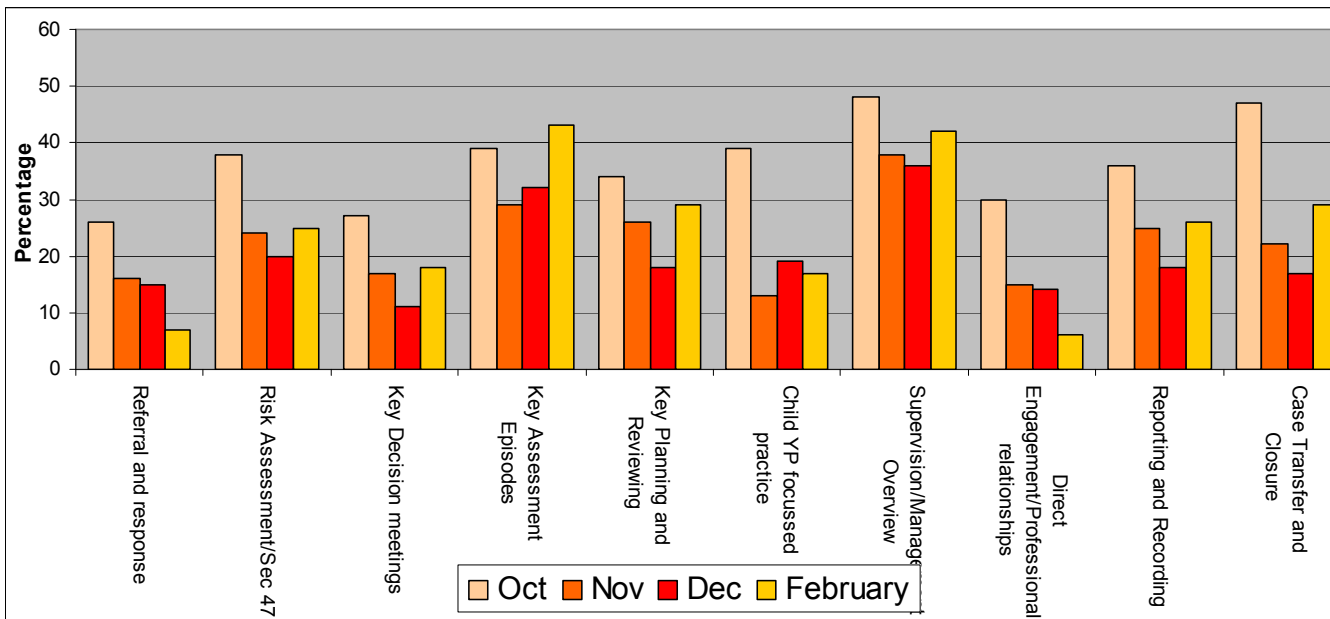
January Audit Theme: Child Protection Core



Comparisons of Good Practice (Oct-Dec, Feb)



Comparisons of Poor Practice (Oct-Dec, Feb)





Haringey Council

KEY –

IA – INADEQUATE / CRITICAL – needs immediate manager action

IA – INADEQUATE

A – ADEQUATE

G – GOOD

O- OUTSTANDING